

FOREST CARBON – OVERVIEW OF KEPAYANG COMMUNITY FOREST

Forest Carbon has developed a community forest project, namely, the Kepayang Community Forest Project (the “**Kepayang Project**”). The Kepayang Project is a 4,936-ha village forest located within the Merang Kepayang peat dome; one of the oldest, largest, and deepest peat domes in Sumatra. Nestled between the Forest Carbon Sumatera Merang Peatland Project (SMPP) and Berbak Sembilang National Park, the Kepayang Project presents a valuable chance to amplify conservation efforts within a significantly deteriorated landscape.

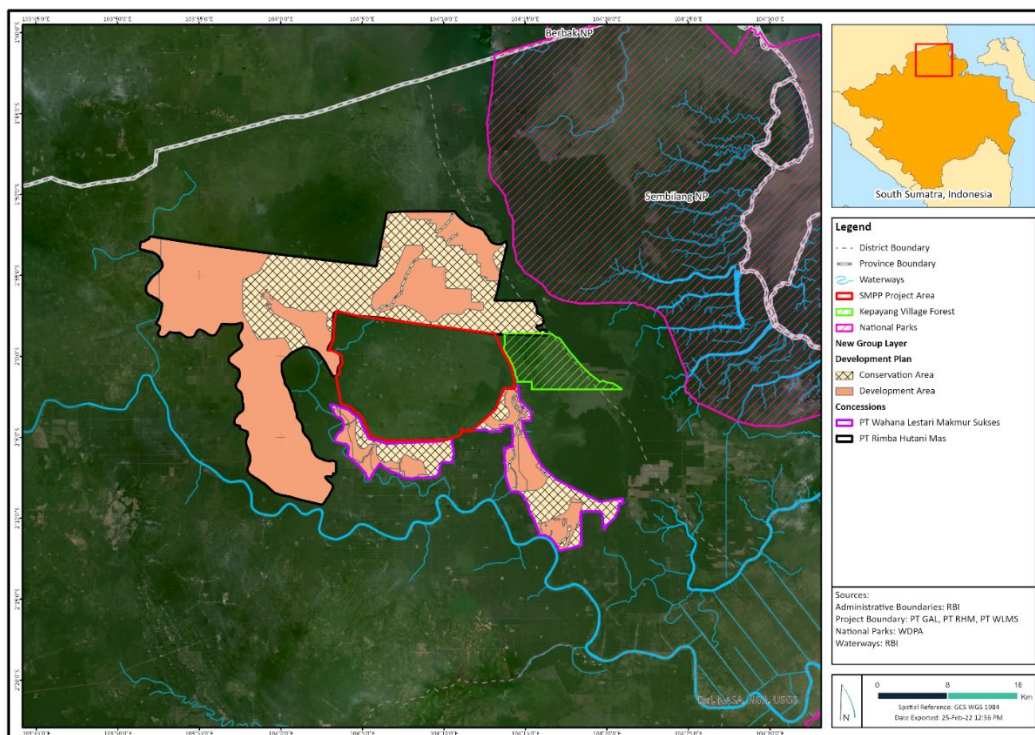


Figure 1 The Sumatra Merang Peatland Project, Surrounding Plantations and the Kepayang Community Forest

As technical partner, Forest Carbon provides capacity to the Kepayang Village Forest Government to design and implement nature-based solution approach to land and resources management, in particular carbon credit mechanism. This initiative represents a shift in strategy from the current community program in SMPP. Rather than providing direct benefits, Forest Carbon are organizing communities to manage their own forest assets. This requires investment in human resources and program design. Forest Carbon have built the program with the following approach.

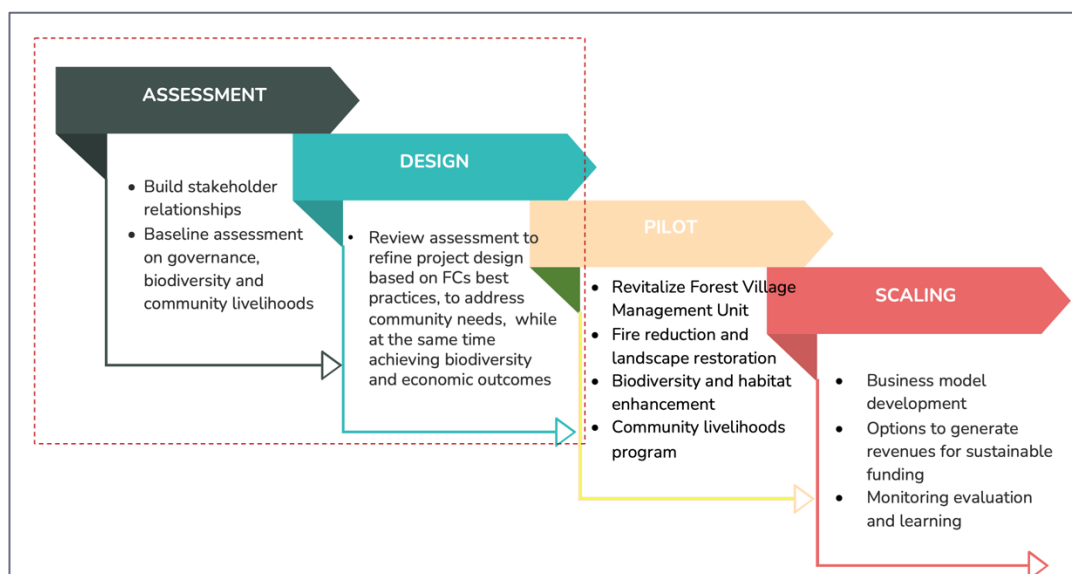


Figure 2 Project approach

The project area experienced extensive forest fires in 2015 and 2019, leading to the devastation of peatlands, standing forests, and the community's rubber plantation, due to prolonged dry seasons attributed to El Nino. Given the risk of recurring fire, substantial time and resources have been dedicated to establishing a fire prevention unit in the project area to prevent and control forest fires. Building on the experience of SMPP and technical expertise from Forest Carbon, the Kepayang project has achieved substantial milestones within 8 months of the project.

- Completion of the socio-economic baseline assessment, revealing high vulnerability to drought and fire incidents, and challenges related to sustainable livelihoods, sanitation, water access, and healthcare services.
- Construction of community wells and one rainwater catchment in the project area, ensuring access to clean water and additional resources for firefighting purposes.
- Establishment of the Kepayang Village Forest fire patrol, equipped with essential training, firefighting equipment, including water pumps, group, and personal equipment.
- Implementation of a daily update system on fire hotspots within a 30km radius of the area through WhatsApp to project staff.
- Construction of canal blocks for peatland rewetting and improve community access following Forest Carbon peer reviewed approach.



Figure 3 Kepadang Fire Patrol Team



Figure 4 Kepadang Fire Patrol training session



Figure 5 Construction of canal blocks